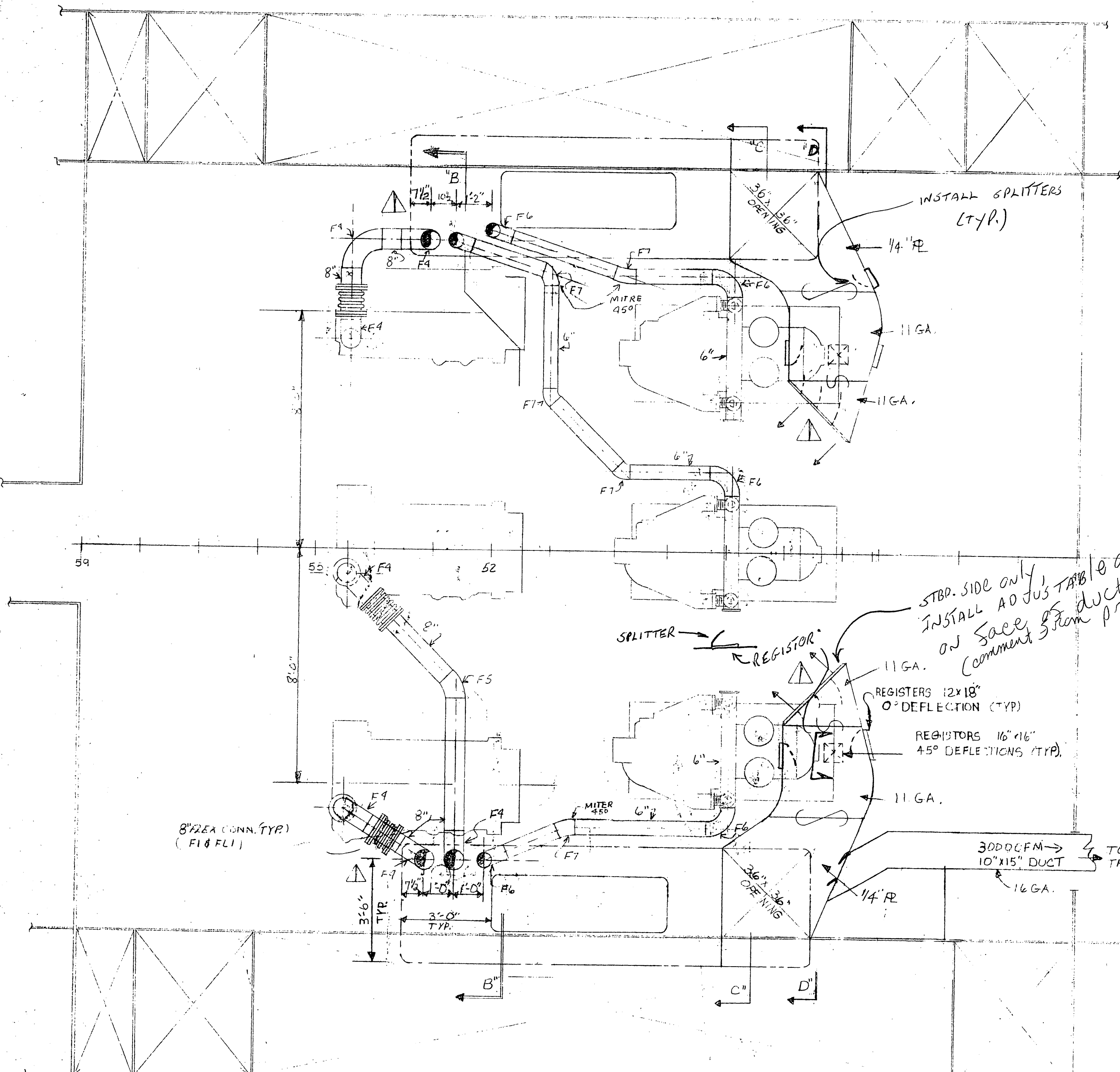
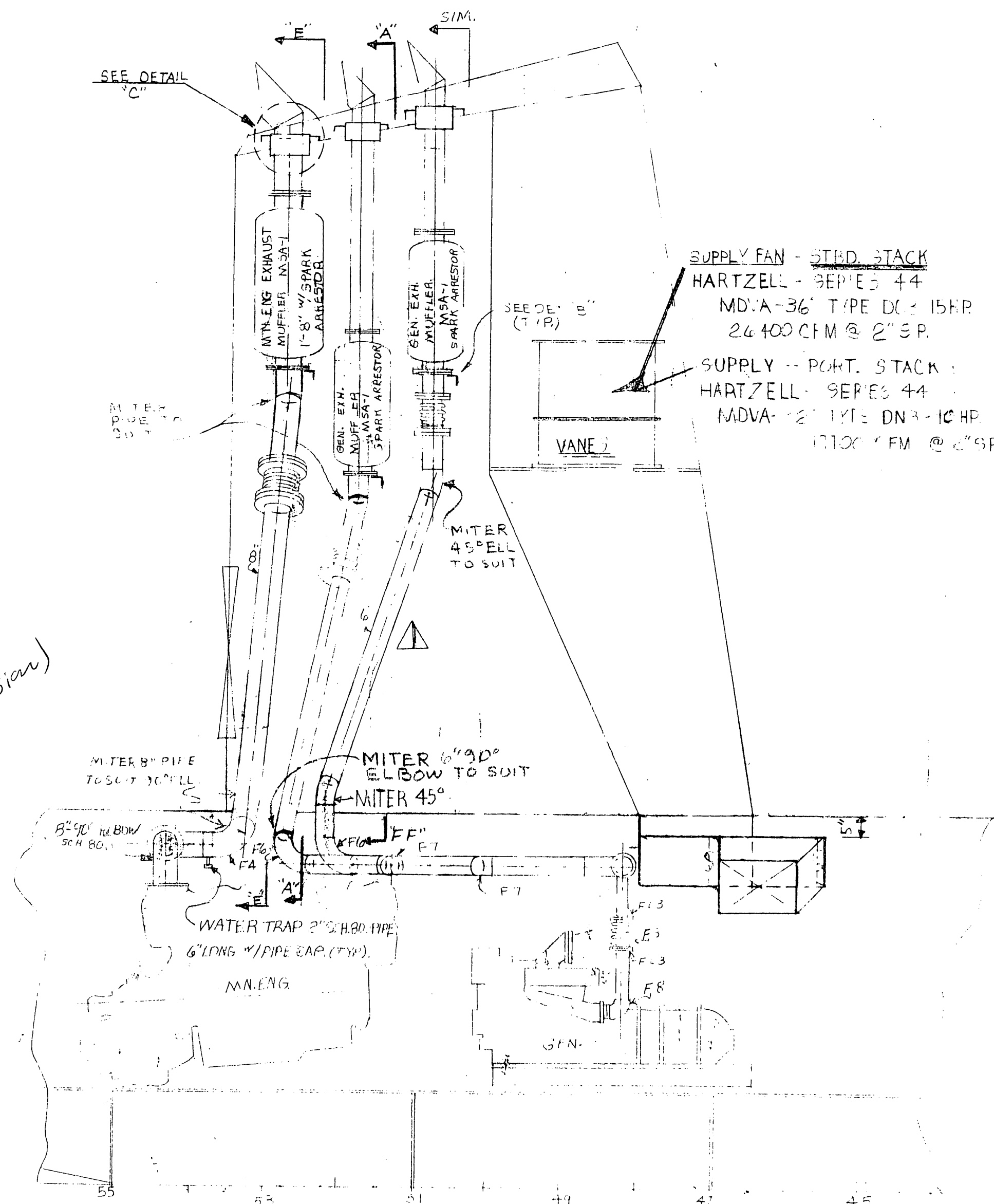


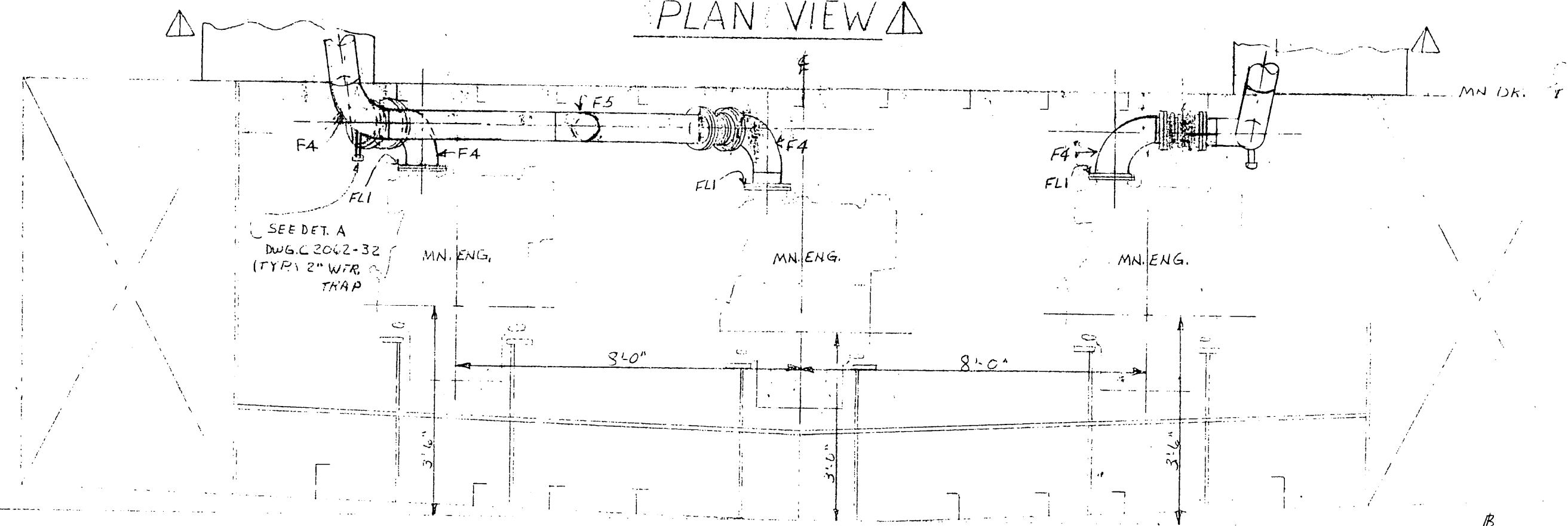
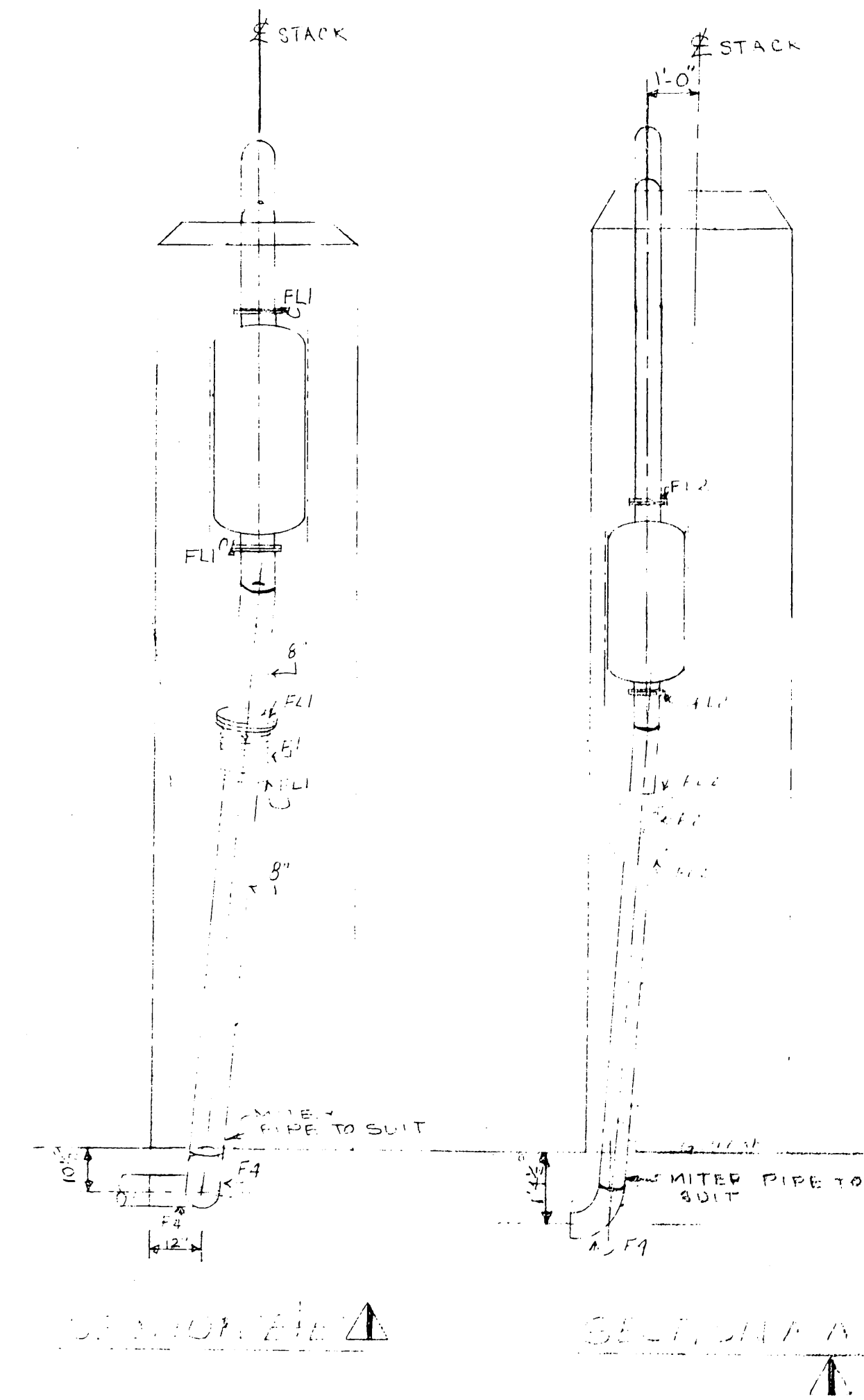
REV. MK.	DESCRIPTION	BY	DATE	APRVD.
1	GENERAL REVISION. ON STACK, EXHAUST PIPING, & VENTILATION PER MARK UP PRINTS BY DALE GEEBES.	ST	8/5/81	



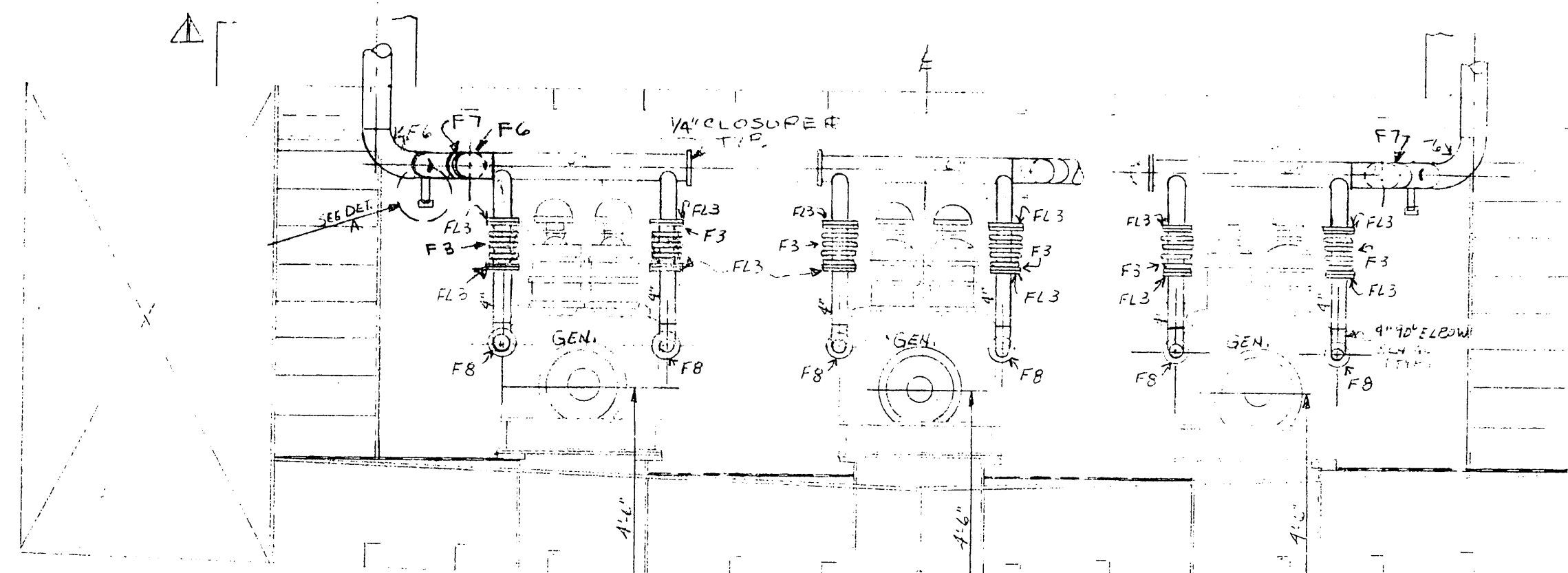
PLAN VIEW



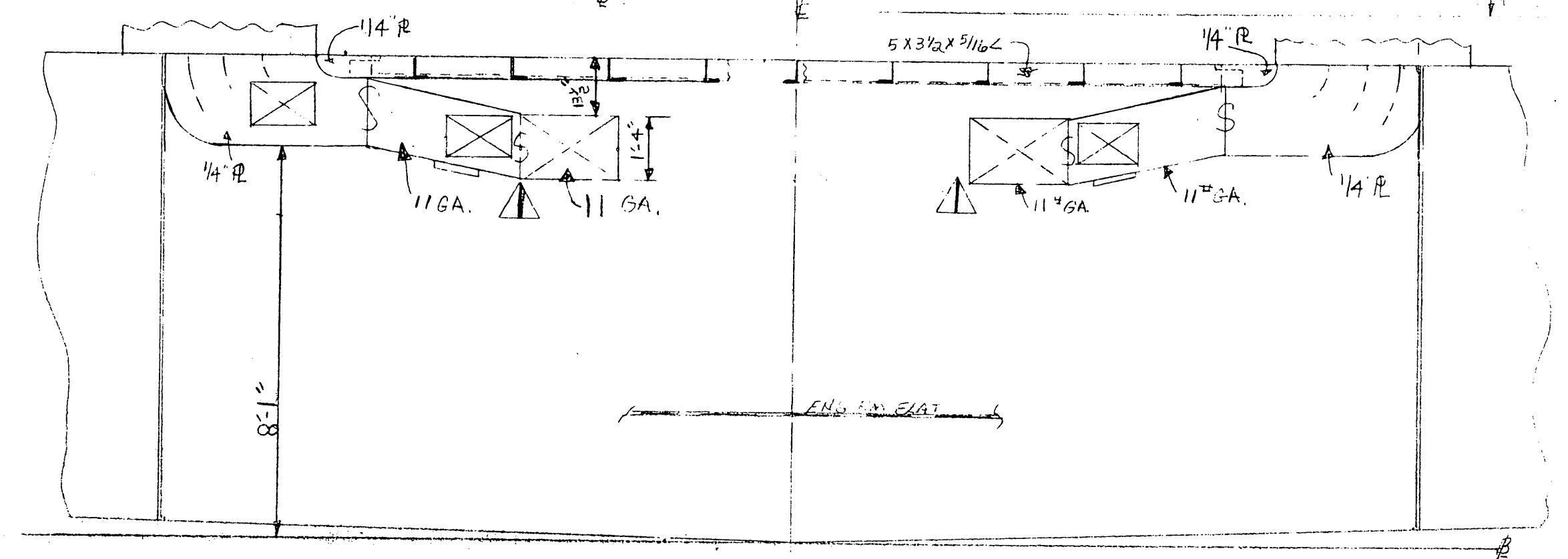
LONG SECTION
PORT SIDE LKG. OUTWARD



SECTION B-B
ZKG. AFT.



SECTION C-C
ZKG. AFT.



SECTION D-D
DETAIL OF DUST WORK ARRANG.
LKG. AFT.

STBD. SIDE ONLY
INSTALL ADJUSTABLE DAMPER
ON SACE OF DUCT
(COMMENT FROM PREV. REVISION)

NOTE:
DETAIL AND DIMENSIONS
ARE LISTED ON DRAWING C-2062-32

CHECK PRINT

Inspector's Copy

DESIGN ASSOCIATES, INC.
NAVAL ARCHITECTS MARINE ENGINEERS
NEW ORLEANS, LA.

TIDEWATER MARINE SERVICE

143X2 X 10" S.S. SMIC VESSEL

EXHAUST PIPING

Drawn: BA/JT	Date: 6-10-81	Checked: PCB
Traced:	Date:	Checked:
Aprvd:	Date:	Scale: 3/8"=1'-0"
Sheet 1 Of 2	Drawing No. C2062-15	Re: